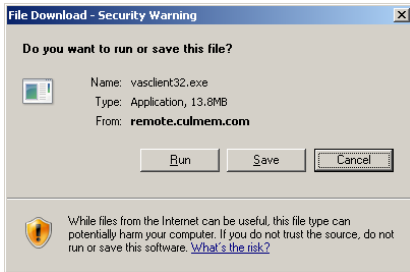


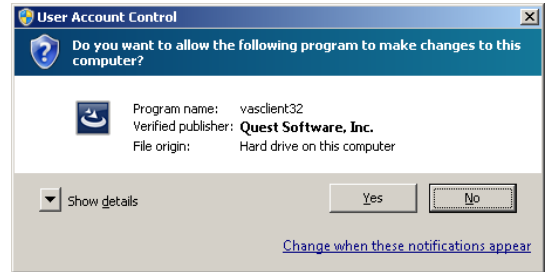
# Quest vWorkspace - Install and Configure Windows Workstation

## Step 1. – Install vWorkspace client

Go to this URL to install client: <http://www.culmem.com /vasclient32.exe>



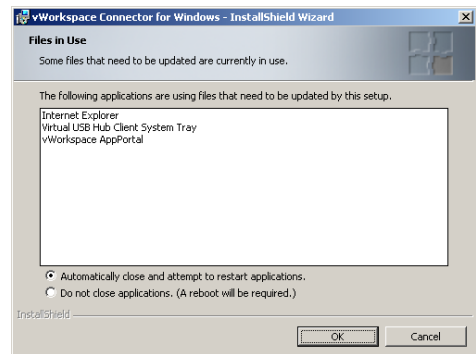
Select 'Run' to begin installation ...



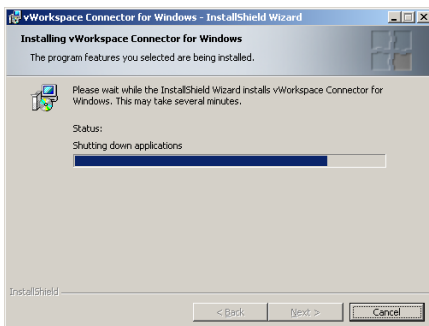
If you get the above message, select 'Yes'...



Select 'Next'



If you get this message, select option then OK'...



Setup shuts down IE then begins the install process...

After the install process completes, select 'Finish' to complete the install and reboot your computer if needed. Typically you do not need to restart the computer after installation.

**In order for vWorkspace connection to work both TCP Ports 443 and 444 must be open to remote.culmem.com. This is something that would effect a business network and typically not a home connection unless advance firewall rules (blocking) are used.**

